

L10 Series

Consumer Book



Family ID Series



14"

xN21-140P3-SCD
xN21-140H3-SCD



15.6"

xN21-156P2-SCD
xN21-156H2-SCD

Modern Portable

Light to 1.35kg @14"

ABCD plastic, A metal option, bron light

Thin to 18.6mm @14" A Metal

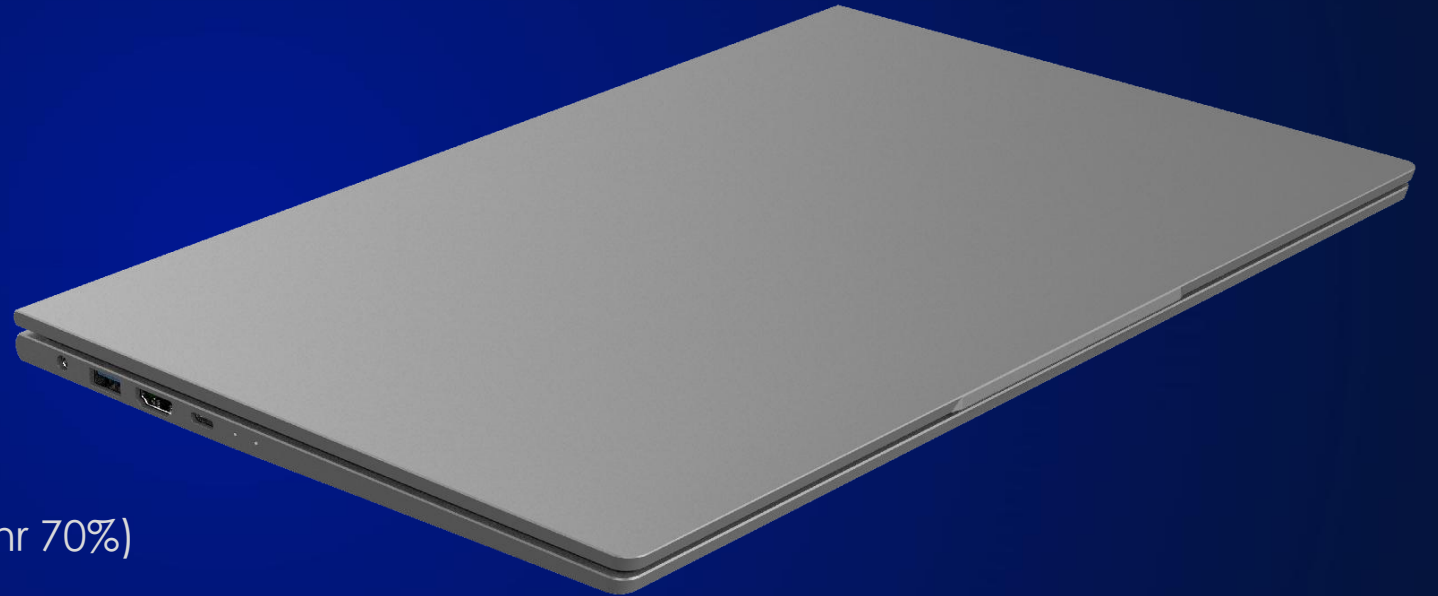
Fan thermal solution, but modern slim

Large to 53.8Wh

Long battery life (9hrs), with fast charge (1hr 70%)

Stable with MIL-STD-810H

Meets durability standards, to stand up to everyday bumps



Thin & Light

14"

Light to 1.35kg

H=19.4mm, ABCD Plastic (xN21-140P3-SCD)

H=18.6mm, A Metal/BCD Plastic (xN21-140H3-SCD)

H=17.6mm, AD Metal/BC Plastic
(D metal is not support now)



15.6"

Light to 1.65kg

H=19.2mm, ABCD Plastic (xN21-156P2-SCD)

H=18.2mm, A Metal/BCD Plastic (xN21-156H2-SCD)

H=17.2mm, AD Metal/BC Plastic
(D metal is not support now)



Open to 180°



180° open angle



Open with one hand

Immersive Vision

14"

14-inch 16:9

Narrow bezel

87% screen-to-body ratio

1080P

1920 × 1080 FHD

5.2mm

8.4mm



Immersive Vision

15.6"
15.6-inch 16:9

Narrow bezel
88% screen-to-body ratio

1080P
1920 x 1080 FHD



Comfortable Typing



Fingerprint
Windows Hello



Big keycap
US/UK option



Backlit keyboard
Multi-brightness



Large touchpad
Support PTP



Horseshoe
keyboard



Square
keyboard option

Friendly Indicator

Power LED

Wifi/Caps Lock LED

Num Lock LED

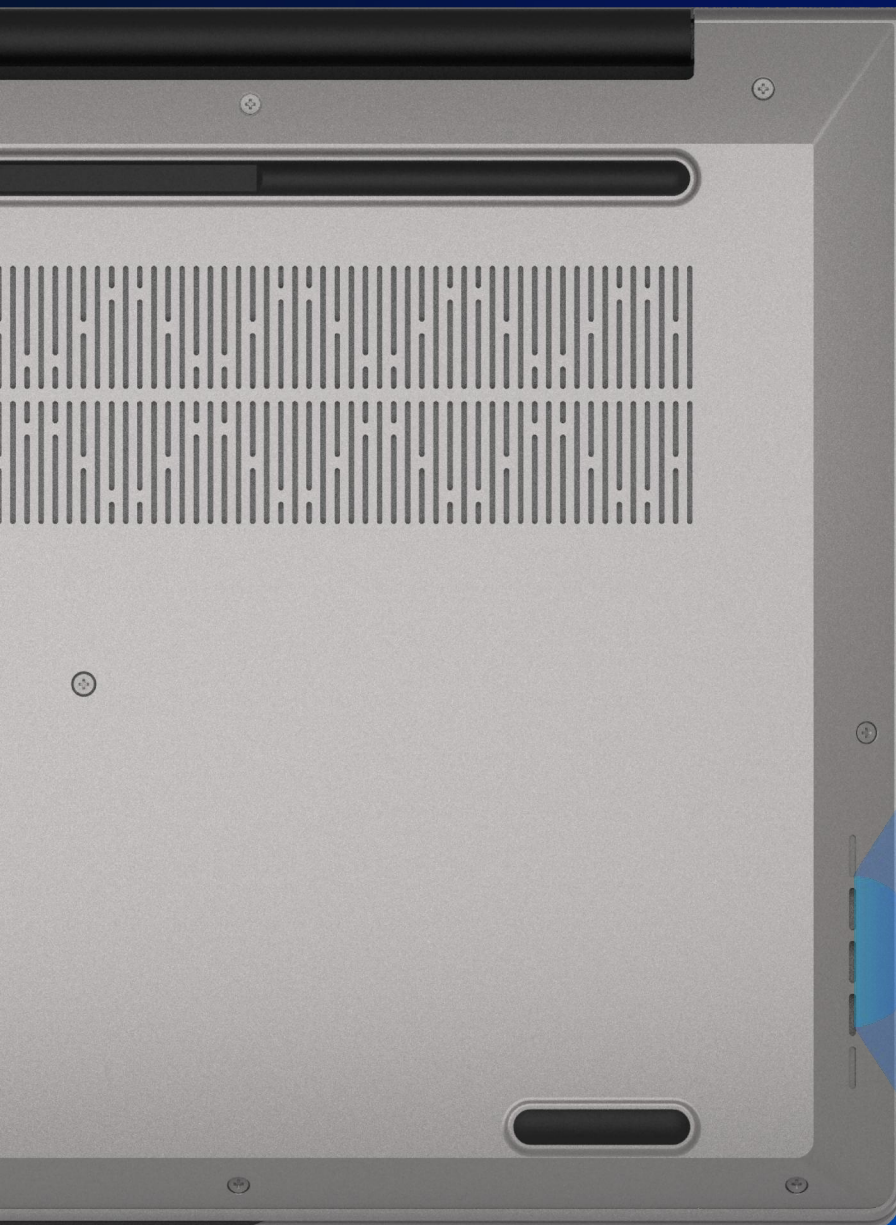
Caps Lock LED

Power LED

Charge LED



Advanced Audio



2 × 4Ω 2W / 8Ω 1W
Hi-Fi speaker



DOLBY



nahimic

Dolby/ Nahimic option

Rich I/O

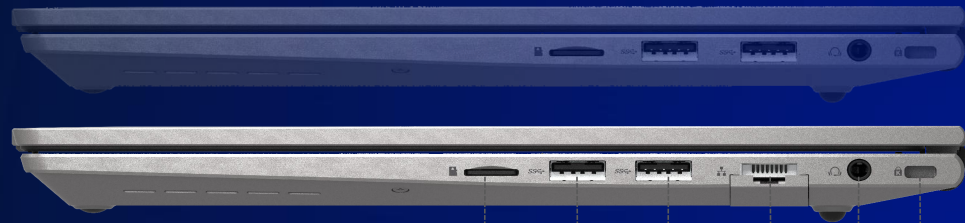
DB Side

MB Side

Non-RJ45 option

DC option

14"



Micro SD USB2.0 USB3.2 Gen1 RJ45 K-Lock Audio

Type-C PD only USB3.2 Gen1 HDMI Type-C TBT option DC option

Non-RJ45 option

DC option

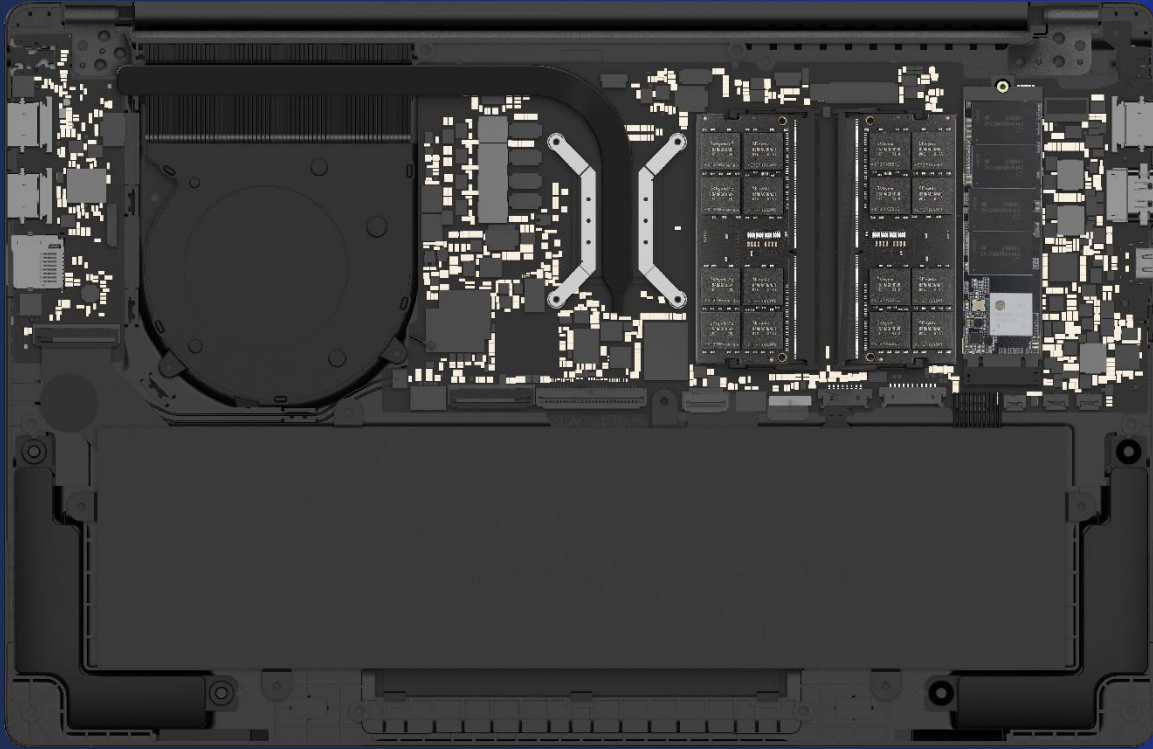
15.6"



Micro SD USB2.0 USB3.2 Gen1 RJ45 K-Lock Audio

Type-C PD only USB3.2 Gen1 HDMI Type-C TBT option DC option

Flexible Configuration



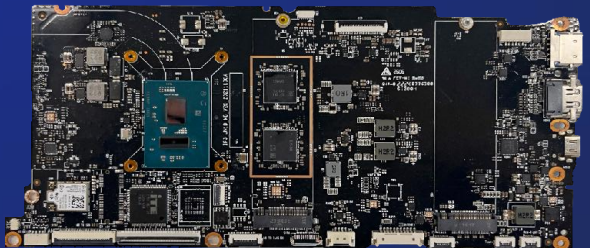
Single FAN
15.6" 30W thermal
14" 15W thermal



2*SODIMM
1*SSD



Onboard DDR
1*SSD



Onboard DDR
2*SSD

Security



TPM2.0



Kensington Lock



Camera Switch



Fingerprint

- Option1: On touchpad
- Option2: On powerkey
- Option3: Right of touchpad



Stability

MIL-STD-810H



High
Temperature



Low
Temperature



Temperature
Shock



Solar Radiation
(Sunshine)



Low Pressure
(Altitude)



Six Views



14"

Full plastic: 321.7*206.6*19.4 mm
A metal: 321.7*206.6*18.6 mm
AD metal: 321.7*206.6*17.6 mm

Six Views



15.6"

Full plastic: 357.4*228*19.2 mm

A metal: 357.4*228*18.2 mm

AD metal: 357.4*228*17.2 mm

Roadmap

MP

Developing

Planning

Tooling

L10

15.6" (16:9)
Full Plastic, A metal option
Thermal 30W

14.0" (16:10)
Full Plastic, A metal option
Thermal 15W

14.0" (16:9)
Full Plastic, A metal option
Thermal 15W

16.0" (16:10)
Full Plastic, A metal option
Thermal 30W

PCBA

xN21
xN1G

Intel
ADL-N | JSL | GLK
RPL-U/P | ADL-U/P | ICL-U |
CML-U/CFL-U/WHL-U

AMD
PHX-U | RMB-U | MDN |
RNR-U | CZN-U | LCN-U |
BCL-U | Dali | PCO-U |
Stoney Ridge

ZhaoXin
KX-6640MA | KX-6000G

Intel
MTL-U

AMD
FP8, HPT-U

Available

2023Q3

2023Q4

2024Q1

2024Q2

Specification

Item	Description	Item	Description	
LCD	14" / 15.6", 16:9 1366*768 or 1920*1080	I/O Ports	Left	
CPU	Intel RPL-U/P ADL-U/P ICL-U CML/CFL/WHL-U ADL-N JSL GLK AMD PHX-U RMB-U MDN PCO/Dali StoneyRidge			1*USB 3.2 Gen1 Type-A
GPU	Integrated			2*USB Type-C or 1*Type-C + 1*DC
Memory	1 or 2*SO-DIMM or Onboard		Right	1*HDMI1.4 or 2.1 TMDS
Storage	1 or 2*M.2 2280 SSD			1*Ø3.5mm Audio Combo
	1*eMMC option (Small core only)			1*USB3.2 Gen1 Type-A
Battery	14" : 7.6V/6000mah 45.6Wh or 11.4V/4390mah 50Wh 15.6" : 7.6V/6000mah 45.6Wh or 11.4V/4700mah 53.6Wh		1*USB2.0 Type-A	
Camera	1MP/2MP (With privacy switch)		1*RJ45 GLAN	
WiFi	Support WiFi 802.11 b/g/n/ac/ax	Keyboard	1*Micro SD	
BT	4.2 above	System	US/ UK	
Speaker	2*8Ω 1W or 2*4Ω 2W, Nahimic/Dolby option	Adaptor	Windows 11/ Linux	
MIC	2*D-MIC on camera module	Material	Type-C PD or DC adaptor	
Fingerprint	Option	Dimension	A/B/C/D plastic, A or AD metal option	
K-Lock	Yes, Kensington Lock		14" : 321.7*206.6*19.4 mm (Full plastic) or H=18.6mm (A metal)/ H=17.6mm (AD metal)	
		Weight	15.6" : 357.4*228*19.2 mm(Full plastic) or H=18.2mm (A metal)/ H=17.2mm (AD metal)	
			14" : <1.4Kg, 15.6" : <1.7Kg	



六联智能
SIXUNITED

T H A N K S

No.66, Shiyuan Road, Songjiang District, Shanghai



Shenzhen office: 35F, Block F, Tongfang Information Harbor, No.11, Langshan Road,
Hi-tech Par(North), Nanshan District, Shenzhen